

WINDOWS PC SOFTWARE TOOL FOR CURTIS PROGRAMMABLE DEVICES

MODEL 1314 – VERSION 4



CURTIS



DESCRIPTION

The 1314 Windows PC Software Tool provides comprehensive and intuitive PC based programming, monitoring and system diagnostics for all Curtis programmable motor speed controllers and control systems.

APPLICATION

The 1314 Windows PC Software Tool is intended for use by vehicle OEMs, dealers, and service engineers. It provides a powerful Windows interface for adjusting settings, troubleshooting, and recording the parameters of any Curtis speed controller or auxiliary device.

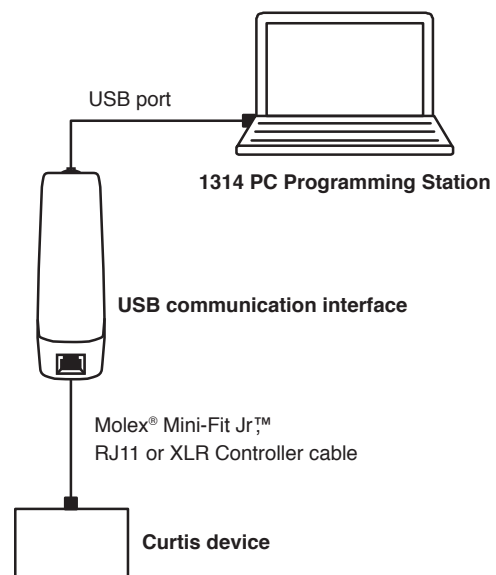
FEATURES

- View and adjust controller programmable parameters.
- Real-time monitoring of system variables such as voltage, temperature, and current.
- Saves all data – parameter values, monitor values, history logs etc., in a single file.
- Edit, rename, export or print files online or offline.
- Clone data between controllers.
- View active fault codes and system timers.
- View and clear controller fault history log.
- Online help and automatic update function (with active internet connection).

SYSTEM REQUIREMENTS

The minimum requirements for the PC Hardware are:

- Processor Pentium III 833MHz
- Windows® XP/Vista/7
- 512MB memory (1024 recommended)
- USB port



www.curtisinstruments.com

MODEL 1314 – VERSION 4

MODEL CHART

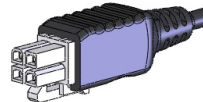
Model Number	Part Number	Description	Comments
1314K-4401	17748700	OEM	Kit includes CD-ROM, USB interface, Molex cable and RJ11 cable
1314K-3301	17748701	Dealer	Kit includes CD-ROM, USB interface, Molex cable and RJ11 cable
1314K-2201	17748702	Service	Kit includes CD-ROM, USB interface, Molex cable and RJ11 cable
1314K-1101	17748703	User	Kit includes CD-ROM, USB interface, Molex cable and RJ11 cable

Cable Options Part Number

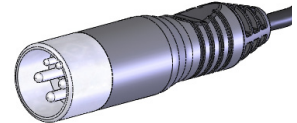
Cable RJ11	98955
Cable 4-Pin Molex	16185
Cable XLR	36378005



RJ11

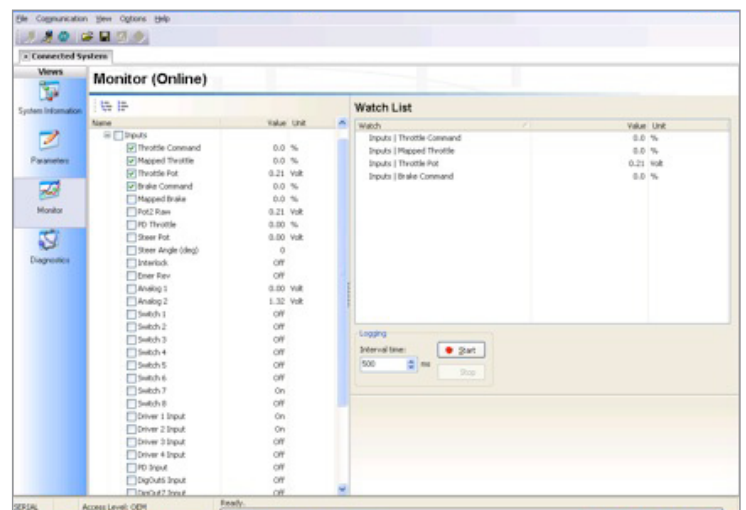
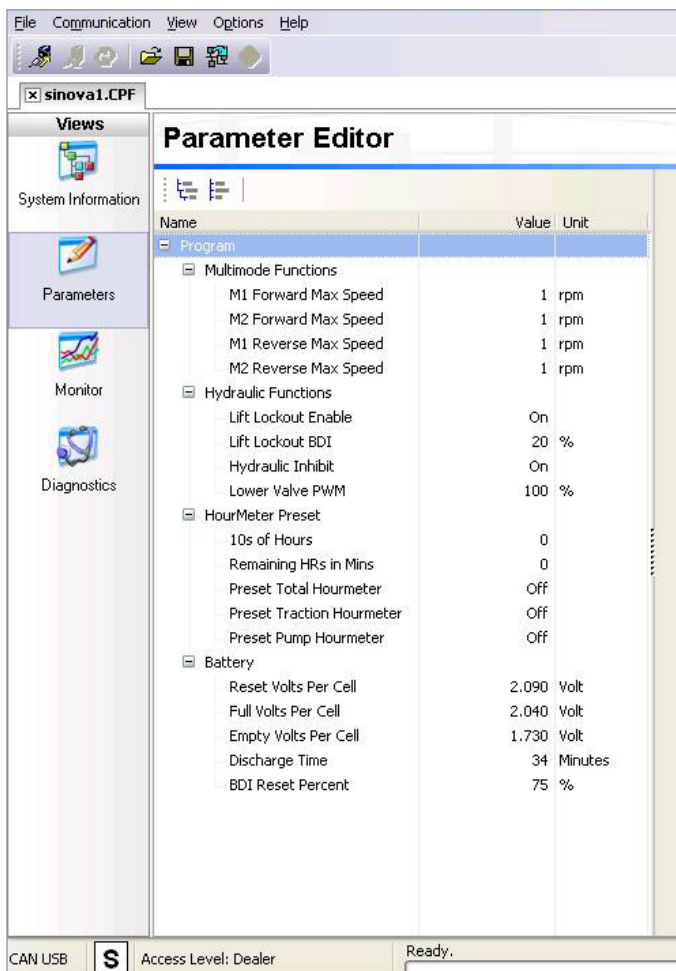


4-Pin Molex



XLR

TYPICAL PROGRAMMING SCREENS



WARRANTY Two year limited warranty from time of delivery.



is a trademark of Curtis Instruments, Inc.

Specifications subject to change without notice

©2012 Curtis Instruments, Inc.

50114 REV E 6/12